



Georgia's
State Water Plan

Water Conservation Assessment Guidance

September 2010

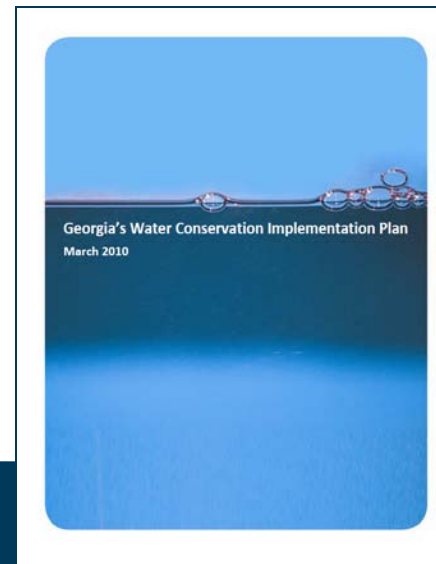
www.georgiawaterplanning.org

Water Conservation Assessment

- State Water Plan, Section 7, Policy 3:
“Water conservation will be a priority water quantity management practice implemented to help meet water needs in all areas of the state, and will be practiced by all water use sectors.”
- Each Council is expected to include demand management in their regional water plan. The degree to which regional demand should be managed should be determined by:
 - the sustainable capacity of the regional resources
 - the level of conservation already implemented by water users in the region
 - the economic benefits of demand management as compared to other quantity management practices

Water Conservation Assessment Guidance

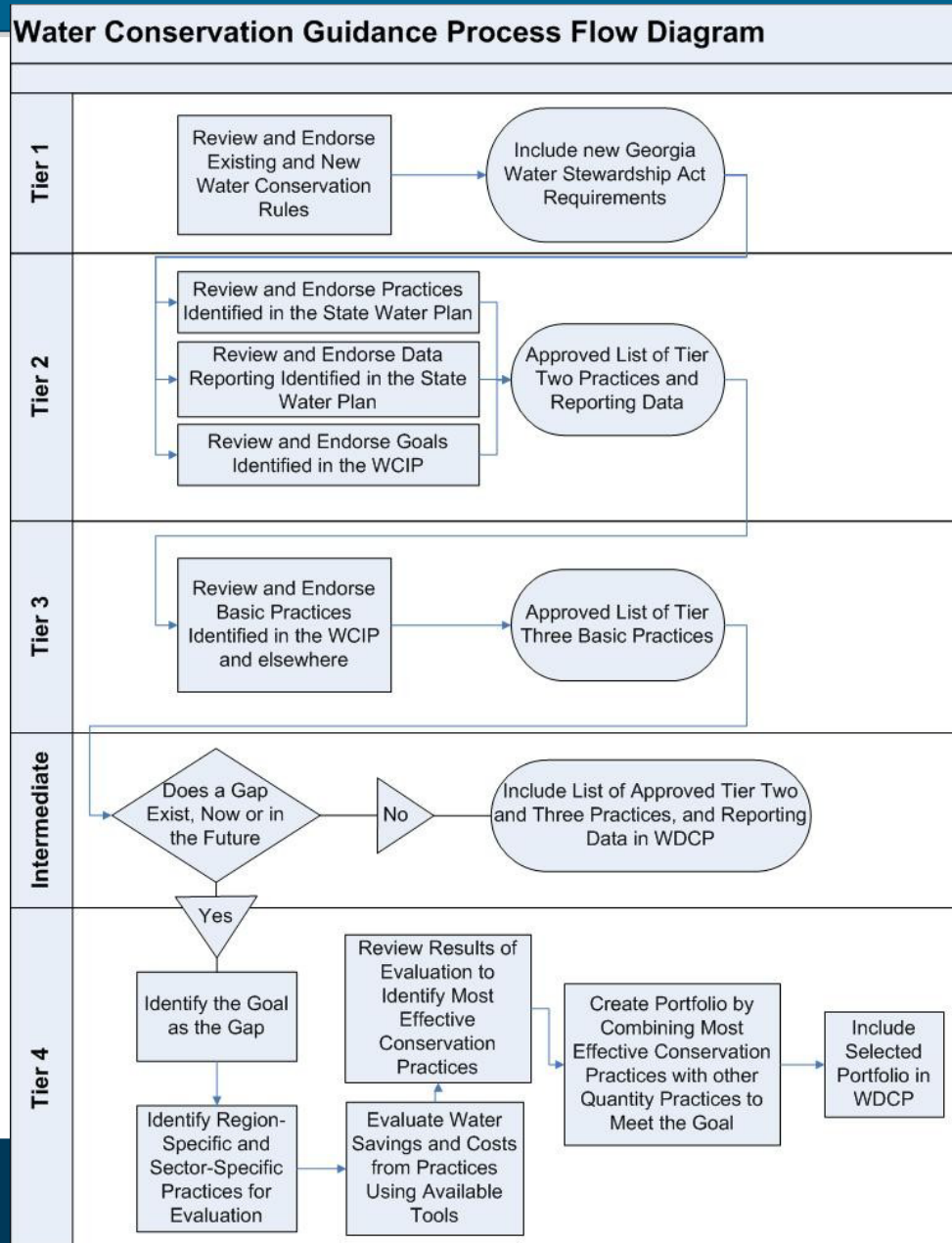
- Builds upon previous guidance presented at CM 6
- Further explains and defines what practices are in each Tier
- Provides framework for considering water conservation practices
- Describes process for Tier FOUR conservation assessment
- Integrates the WCIP and SWP



Overview of Tiers

- **Tier ONE practices** – mandatory through rules or law (permittees)
- **Tier TWO practices** – options addressed through rule (permittees)
- **Tier THREE practices** – optional, basic (permittees and others)
- **Tier FOUR practices** – optional, beyond basic to help “close the gap” (permittees and others)

Conservation Assessment Process Flow Diagram



Tier ONE

- Basic water conservation activities and practices that are currently required, or general mandates that will be included in upcoming amended rules
 - Will result in “natural conservation” adjustments of future forecasted demands

Tier TWO

- Basic water conservation practices that will be addressed in upcoming amended water conservation rules for entities applying for non-farm water withdrawal permits and permit modifications.
 - WCIP goals can be refined
 - Practices outlined in State Water Plan
 - Data needs and reporting outlined in State Water Plan

Tier THREE

- Basic water conservation practices that will not be addressed in current or upcoming amended rules
 - Most practices are low cost
 - Can include practices for all water use sectors – does not need to be limited to entities that hold water permits or are seeking state funding through GEFA

Decision Making Process

- Review the Council's Vision and Goals, and develop evaluation criteria.
- From the long list of practices that are NOT required in current or upcoming amended rules, refine the list to those to be considered during a scoring process.
- Identify a subcommittee to score and prioritize the refined list of practices using the criteria developed from the Council's Vision and Goals
- Review the list of scored and prioritized practices through a Council sub-committees to make recommendations to full Council.
- Select practices to recommend for inclusion in the regional water plan.

Tier FOUR

- “Beyond basic” water conservation practices to be considered if a gap exists between current or future water supplies and demands for the region.

Tier FOUR Conservation Evaluation Process

1. Identify the goal – ultimately the gap to be closed (both existing and future conditions) by managing demand.
2. Identify a full suite of region-specific, sector-specific practices for the region.
3. Evaluate the water savings achievable from implementation of the region-specific water conservation practices (for all water use sectors compiled in the water conservation portfolio.)
4. Using the results of the evaluation performed in step 3, the Council needs to discuss and decide which these water conservation practices will be used to meet their water resource gaps.